



www.santos.fr

## AUTOMATIC CITRUS JUICER WITH LEVER #10

The genuine commercial  
citrus juicer since 1954.  
Ideal for hotels, bars, restaurants.



Internationally Patented Models



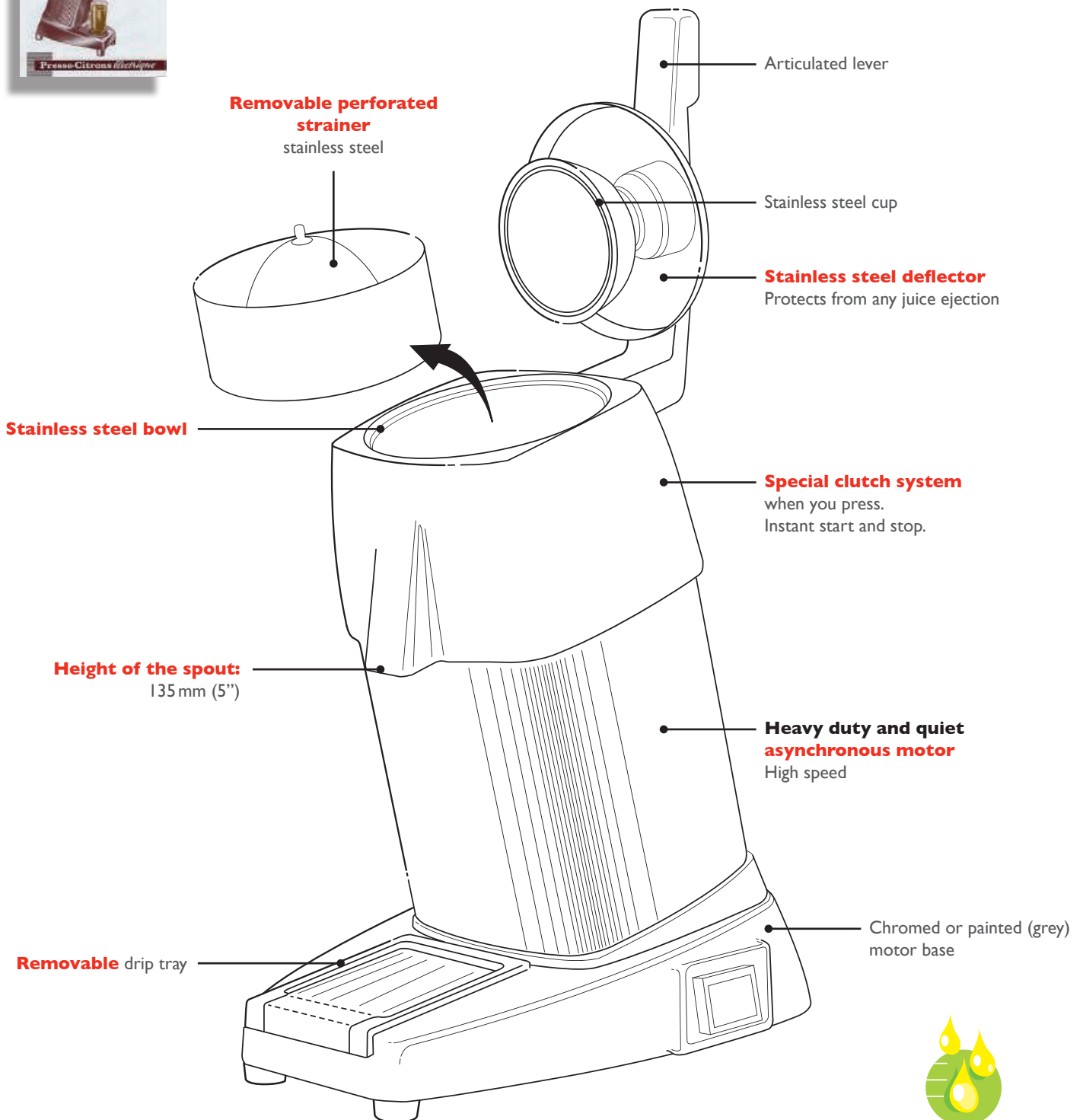


## AUTOMATIC CITRUS

### EASY TO USE



- **The automatic citrus juicer with lever #10** is the ideal product to make juice by glass
- It is equipped with a heavy duty and quiet asynchronous motor
- For use everywhere you need a **fresh squeezed citrus juice**: juice bars, health food stores, hotels, bars, restaurants, cafeterias, ice cream shops, institutions, hospitals...



Output: **30**l/h

# JUICER WITH LEVER #10



## THE PROFESSIONAL ART OF JUICING SINCE 1954

www.santos.fr

**You will find the citrus juicer of your need to make citrus juices either in a glass or in a jug.**

Equipped with powerful asynchronous motors, these appliances allow you to squeeze all types of citrus: lime, lemon, orange or grapefruit. All of these juicers are easy to use and clean: all the parts which are in contact with the fruits are removable.



### TECHNICAL SPECIFICATIONS



#### Motor

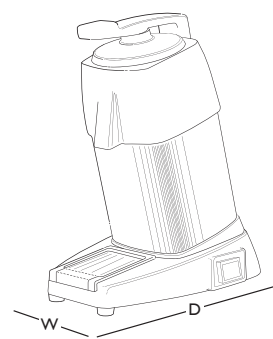
Single phase: 100-120V - 50/60 Hz - 260W - NSF, CE, UL  
220-240V - 50/60 Hz - 230W - GS, CE

Speed: I 500 rpm (50 Hz)  
I 800 rpm (60 Hz)

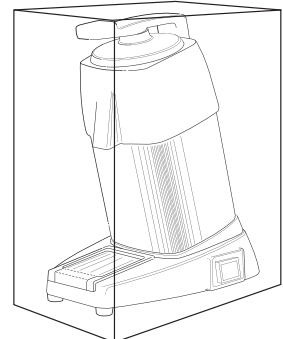


#### Weight

Net: 9.2 kg (20.3 lbs)  
Shipping: 10 kg (22 lbs)



**APPLIANCE**  
W: 200 mm (8")  
D: 300 mm (12")  
H: 380 mm (15")



**SHIPPING BOX**  
W: 250 mm (10")  
D: 340 mm (13")  
H: 440 mm (17")

### SAFETY, STANDARDS, HYGIENE

#### In accordance with the following regulations:

Machinery directive 2006/42/EC  
Electromagnetic compatibility 2004/108/EC  
"Low voltage" directive 2006/95/EC  
RoHS directive 2002/95/EC  
Regulation 1935/2004/EC (contact with food)

#### Harmonized European standards:

EN ISO 12100 - 1 AND 2: 2004  
EN 60204-1: 2006  
EN 60335-2-64: 2004: commercial electric kitchen machines

CE (European standards), GS (Germany) controlled by LNE laboratory, UL (USA & Canada), NSF (USA)

#### Thermal safety

Motor protected by internal thermal detector.

#### Electrical safety

- On/Off interlock switch is waterproof.
- All mechanical parts are ground (earth) connected.
- All equipment is perfectly controlled after assembly (special electrical testing bay).

#### Acoustic safety

The asynchronous motor with clutch system is particularly silent.

#### Hygiene

All removable parts can be put in a dishwasher or easily cleaned with hot soapy water (NSF approved).

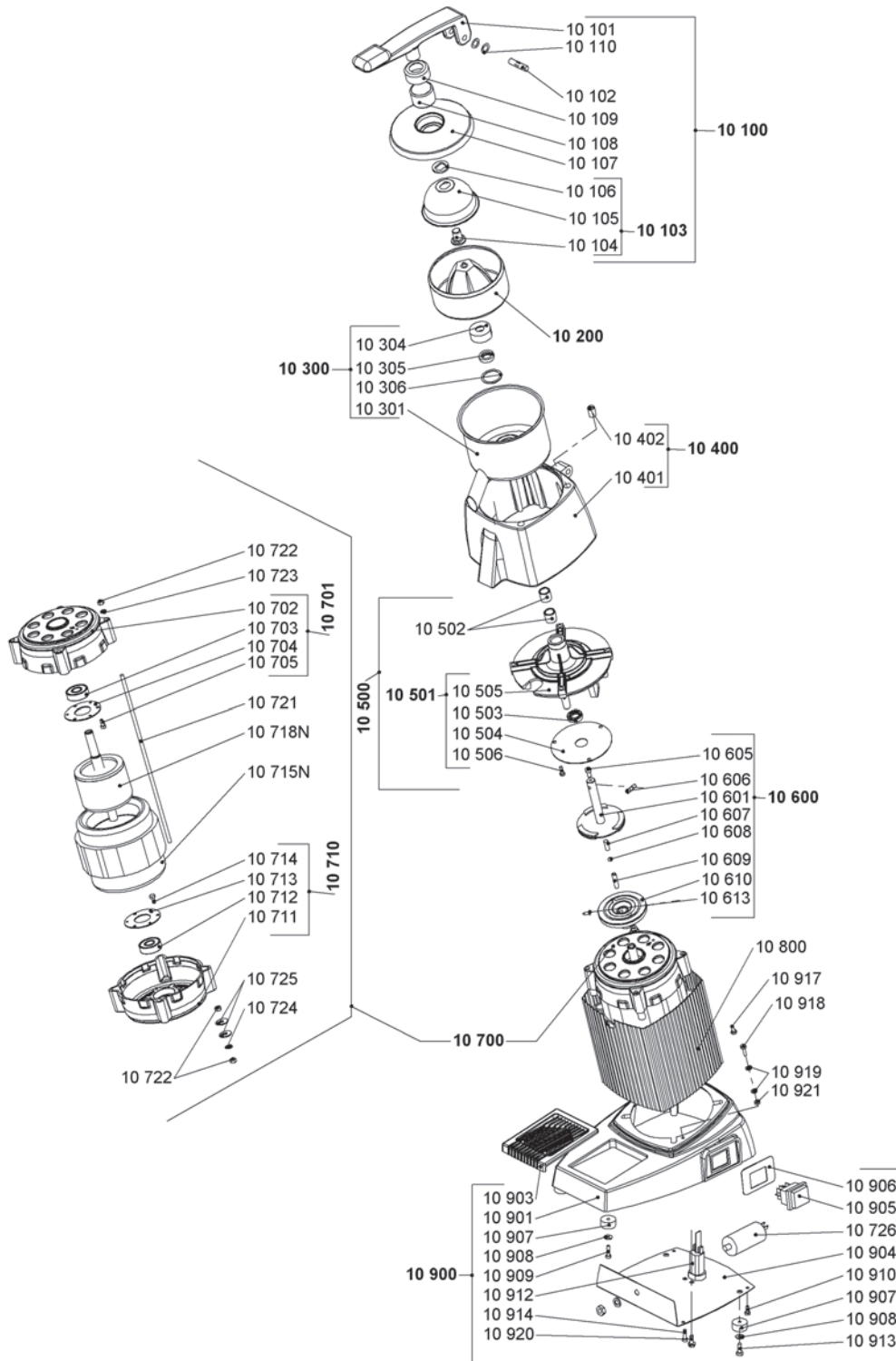
**PRODUCT: 2-YEAR WARRANTY | MOTOR: 5-YEAR WARRANTY**



# AUTOMATIC CITRUS JUICER WITH LEVER #10



www.santos.fr



**SANTOS**

140-150 avenue Roger Salengro – 69120 – Vaulx-en-Velin (Lyon) – FRANCE – Tel. +33 472 37 35 29 – Fax +33 478 26 58 21

**Website:** www.santos.fr – **Email:** santos@santos.fr